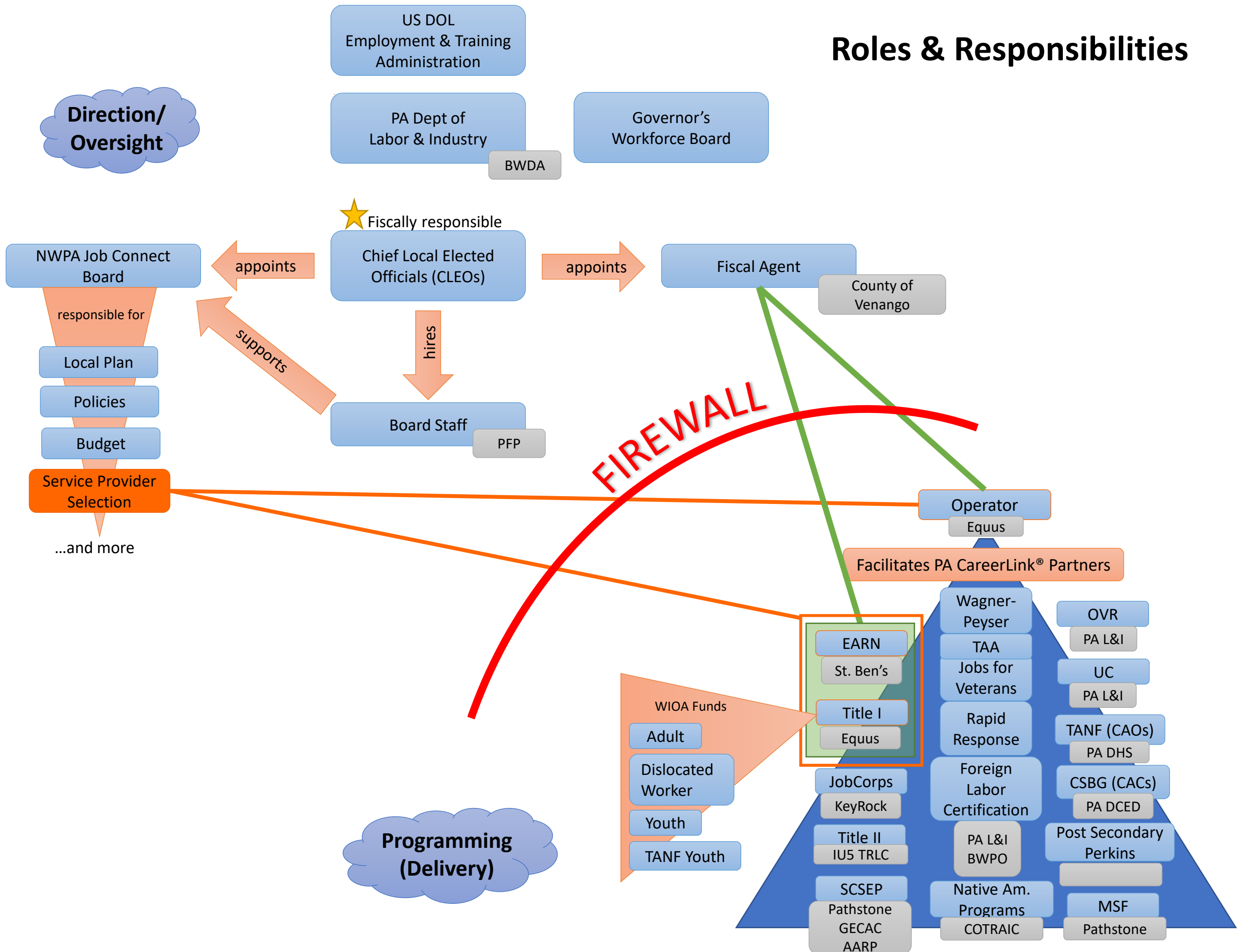


# Roles & Responsibilities



# Direction/Oversight: US DOL

## Employment & Training Administration

Federal Level Legislation – Workforce Innovation & Opportunity Act (2014)

- Provides guidance to states for oversight and service delivery in accordance with the Act
- Provides funding to states

# Direction/Oversight: Pennsylvania

## Dept of Labor & Industry, Bureau of Workforce Development Administration (BWDA)

### ***Oversight: Accountable to US DOL, ETA***

- Provides State Policy and Guidance for implementing and monitoring local workforce programs
- Charged with monitoring local areas for compliance with policies and regulations (program and fiscal)
- Provides technical assistance to local areas
- Provides funding to local areas for WIOA programming

# Direction/Oversight: Northwest Workforce Development Area, Chief Local Elected Officials (CLEOs)

***Oversight: All participating counties (6) are liable and accountable for workforce grant funds to PA L&I, BWDA***

- Appoints a Fiscal Agent
- Signs Local Agreements
- NWPA Job Connect Board Membership
- Review NWPA Job Connect recommendations for final approval (policies, Plans, provider selection, budget)
- Serves as board for Partners for Performance (entity that employs NWPA Job Connect staff)

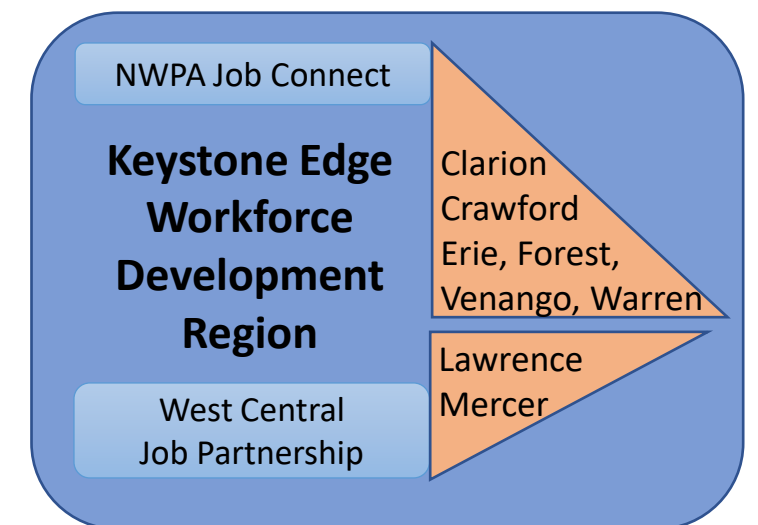
# Direction/Oversight: Northwest Workforce Development Area, NWPA Job Connect Board

## ***Oversight: Accountable with CLEOs to PA L&I, BWDA***

- Recommend approval to CLEOs
  - Policies, Plans, Budget, Service Provider Selection (Title I, Operator, EARN)
- Program Provision – Service Delivery, Sites, Mobile Service Delivery, Accessibility
- Oversight (Title I, Operator, EARN)
- Negotiation of Local Performance Accountability Measures

# Direction/Oversight: Northwest Workforce Development Area, NWPA Job Connect Board (*continued*)

- Convening, Brokering, Leveraging
- Workforce Research & Labor Market Analysis
- Employer Engagement
- Career Pathways Development
- Proven & Promising Practices
- Technology
- Coordination with Education Providers



# Direction/Oversight: Northwest Workforce Development Area, Board Staff

***Accountable to Partners for Performance (CLEOs), NWPA Job Connect Board, PA L&I:BWDA***

- Serves as administrative entity to implement the mission and vision of the NWPA Job Connect board and the CLEOs
- Ensures Service Provision (Title I, Operator, EARN) on behalf of the board
- Conducts local monitoring
- Provides programmatic oversight and compliance for programming

**Prohibited from providing services and programmatic management.**

**Does not receive funds.**

# Direction/Oversight: Northwest Workforce Development Area, Fiscal Agent

## ***Accountable to CLEOs, PA L&I:BWDA***

- Account for all dollars awarded to the workforce area
- Work with CLEOs and staff to prepare budgets
- Enter into all contracts on behalf of the board
- Respond to all fiscal inquiries made by grant sources, board members, and CLEOs
- Fulfills Right to Know requests
- Prepare and submit to the funding streams all financial data submissions as required
- Has financial oversight of Title I, Operator, and EARN



# Programming (Delivery): Operator

## ***Accountable to the NWPA Job Connect Board & CLEOs***

- Selected by NWPA Job Connect board/CLEOs through competitive RFP process (contracted separately from Title I and has no operational control over any partner)
- Facilitates cooperation among PA CareerLink<sup>®</sup> partners in accomplishing successful service delivery to clients
- Works with board staff on continuous improvement of the workforce system
- Coordinates PA CareerLink<sup>®</sup> Certification with board staff
- Is reviewed by partners

# Programming (Delivery): Title I

***Accountable to: NWPA Job Connect board/CLEOs***

Selected by NWPA Job Connect board/CLEOs through competitive RFP process. Fiscal Services provided by County of Venango. *Current contractor: Equus Workforce Solutions*

**Staff serves** all PA CareerLink® clients (Adults, Dislocated Workers, Youth – out-of-school and in-school) and facilitates eligibility process and associated services for WIOA clients and employers. Also serves dual enrollment Trade-impacted dislocated workers

**Funding** for Title I comes from PA Dept of Labor & Industry, through NWPA Job Connect board/CLEOs

**Services:**

- ITAs for HPOs
- OJTs with Employers
- Supportive Services
- Business Solutions
- Incumbent Worker Training

# Programming (Delivery): EARN – Employment, Advancement, and Retention Network

***Accountable to: DHS/NWPA Job Connect board/CLEOs***

Selected by NWPA Job Connect board/CLEOs through a competitive RFP process. Fiscal Services provided by County of Venango. *Current contractor: St. Benedict Education Center*

**Staff serves** EARN eligible clients (TANF). Receives referrals from County Assistance Offices

**Funding** for EARN comes from the PA Department of Human Services and supports the various needs of clients and supports a job first philosophy (180 days)

# Programming (Delivery): OVR

## Office of Vocational Rehabilitation

***Accountable to: PA Department of Labor & Industry. OVR services are provided by Commonwealth employees.***

**Staff serves** only clients with the most severe disabilities (adult & youth) seeking employment and/or training. Other clients with disabilities are referred to other PA CareerLink<sup>®</sup> partners.

**Funding:** from the PA Department of Labor & Industry

### **Services:**

- Diagnostic Services & Assessment
- Vocational Evaluation
- Training Assistance
- Home & Auto Modifications
- Assistive Technology
- Employer Services
- Accessibility Analysis
- Staffing
- Financial Incentives
- Awareness

[HOME](#)

***Required Representative on the NWPA Job Connect Board***

# Programming (Delivery): Title II Adult Education & Literacy

***Accountable to: PA Department of Education. Current contractor is Northwest Tri-County Intermediate Unit (IU5)***

**Staff serves** adults & students age 16 and up, disenrolled from public school with a goal of entering post-secondary training and/or the workplace

**Funding:** PA Department of Education

## **Services:**

- Basic academic and workplace skills instruction
- Upskilling
- Preparation to pass the GED or HiSET exams needed to earn a PA Commonwealth HSE Diploma
- English language acquisition classes
- Specialized workplace classes for preparing new and advancing incumbent workers

***Required Representative on the NWPA Job Connect Board***

# Programming (Delivery): BWPO – Bureau of Workforce Partnerships & Operations

***Accountable to: PA Department of Labor & Industry.***  
*Services provided by Commonwealth employees*

**Staff serves** veterans, dislocated workers, adults, and employers

**Funding:** PA Department of Labor & Industry

## **Services:**

- Title I – Veterans Programs (DVOP & LVER)
- Title III: Wagner-Peyser – job seeker
- Employer Services – Job orders, Labor Market Analysis, Hiring Incentives, Rapid Response/TAA

***Required Representative on the NWPA Job Connect Board***